



FMINT33 Fitting Instructions

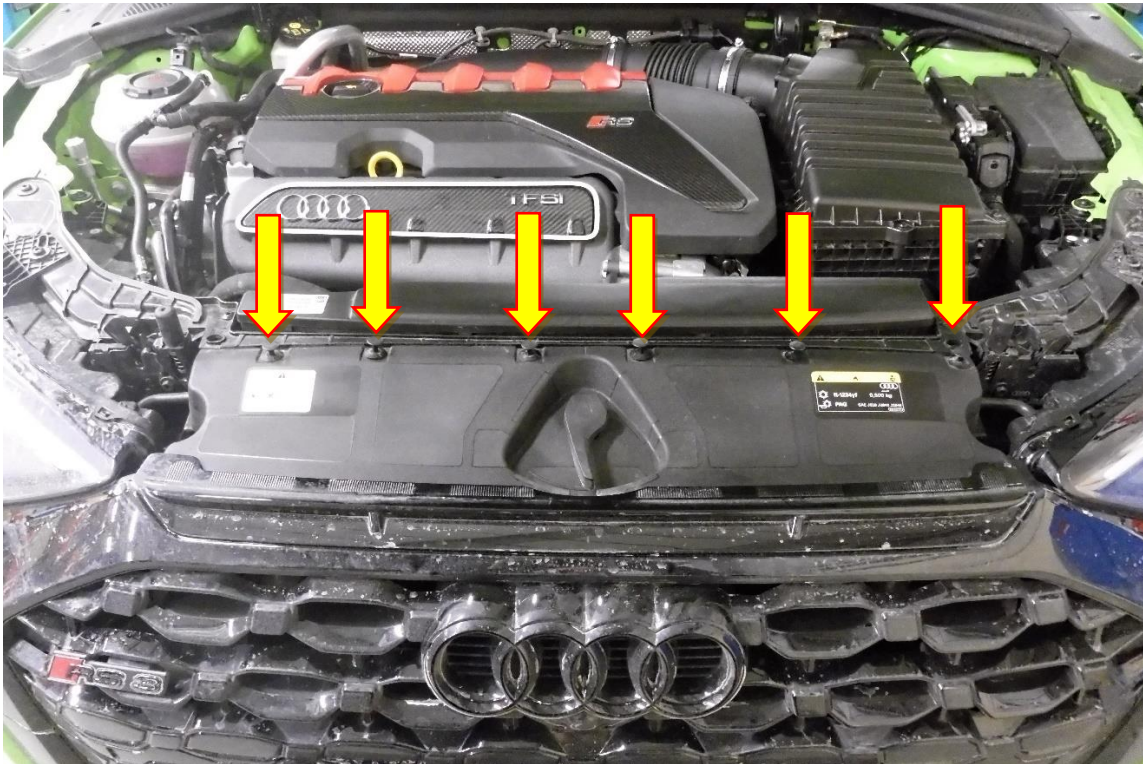


Please thoroughly read through and familiarise yourself with these instructions in their entirety prior to beginning any part of the installation process of any component. Please also ensure the vehicle and engine has cooled down sufficiently to avoid risking possible skin burns or other injury.

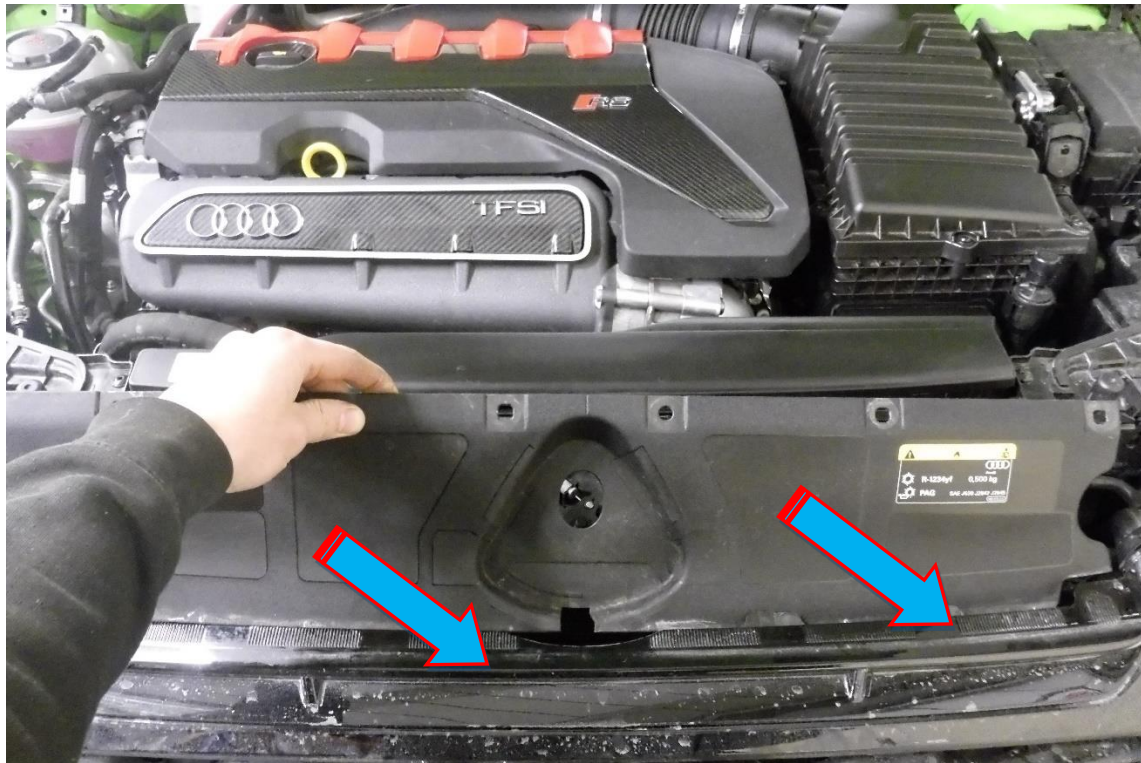
TOOLS NEEDED:

Flat blade screwdriver or trim removal tool
Pozi drive screwdriver.
7,16mm & Ratchet and Drive with extension
T20,T27,T30,T40 Torx drive
3 & 6mm Allen key
Pliers/Hose clamp removal tool
Axle Stands & car jack or car ramp
Angle grinder with cutting disk or Hacksaw

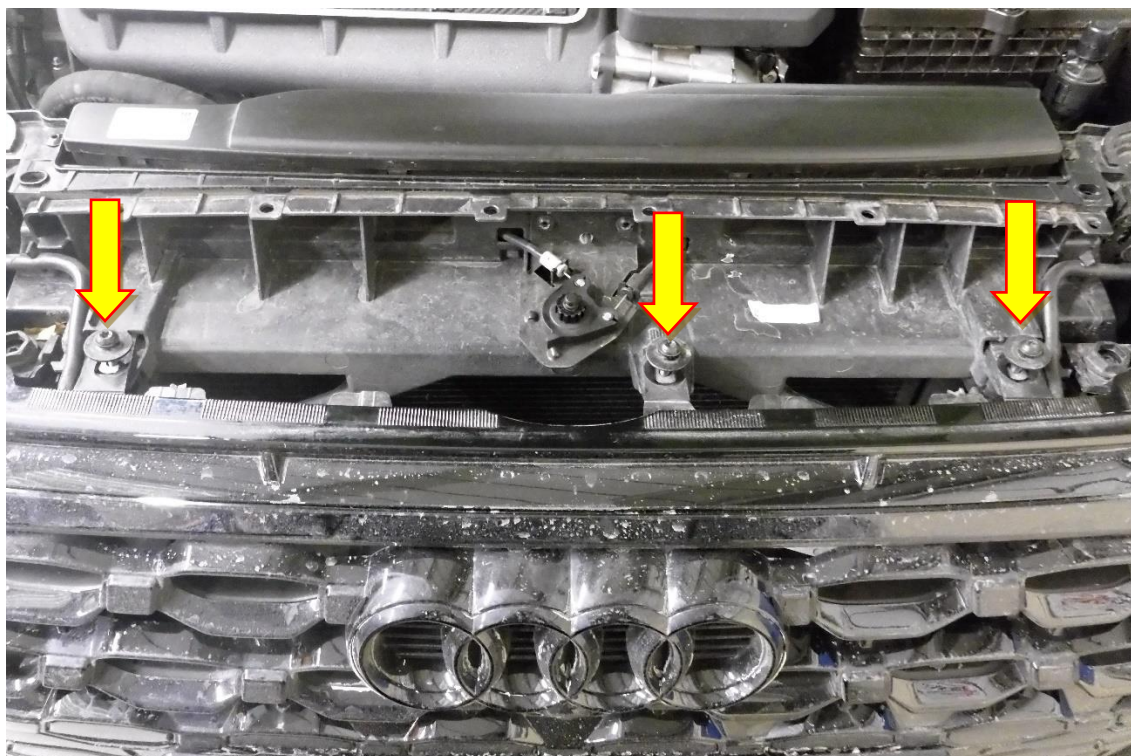
1. Raise the vehicle on a ramp or axle stands to allow access to the underside of the front of the car.
2. Using a trim removal tool or flat blade screwdriver, remove the 6 X plastic retaining clips. Depress the release button at the back of the bonnet latch handle and pull upwards to remove it.



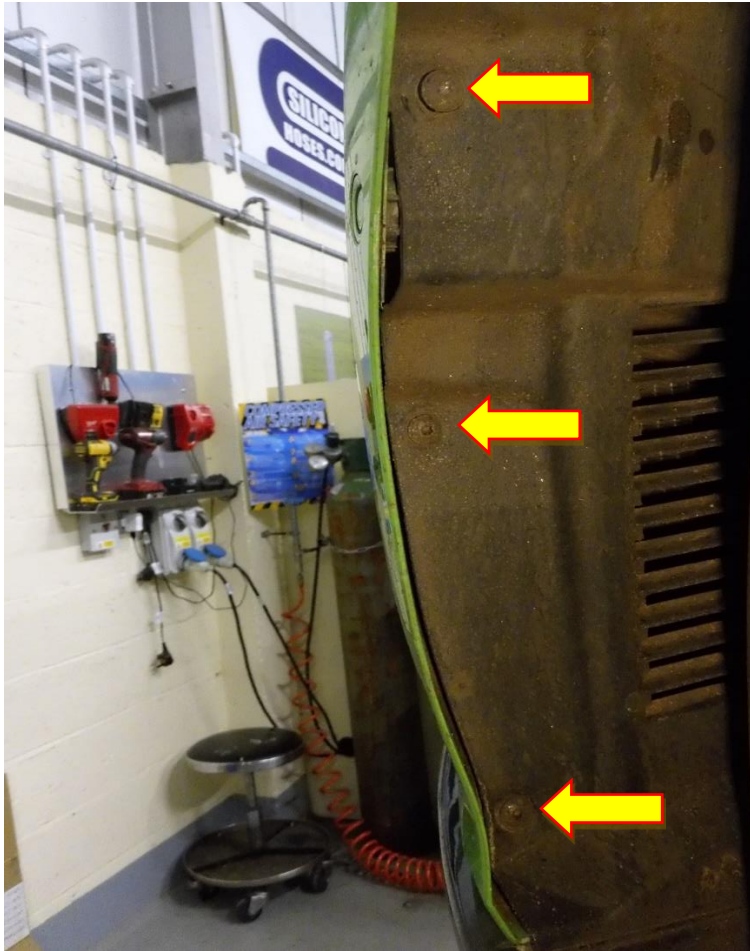
3. Pull the plastic slam panel upwards to remove it.



4. Using a T27 Torx drive remove the 3 X fasteners attaching the grill to the vehicle.



5. Using a T20 Torx driver remove the 3 X fasteners attaching the inner wheel arch liner to the vehicle on both sides.



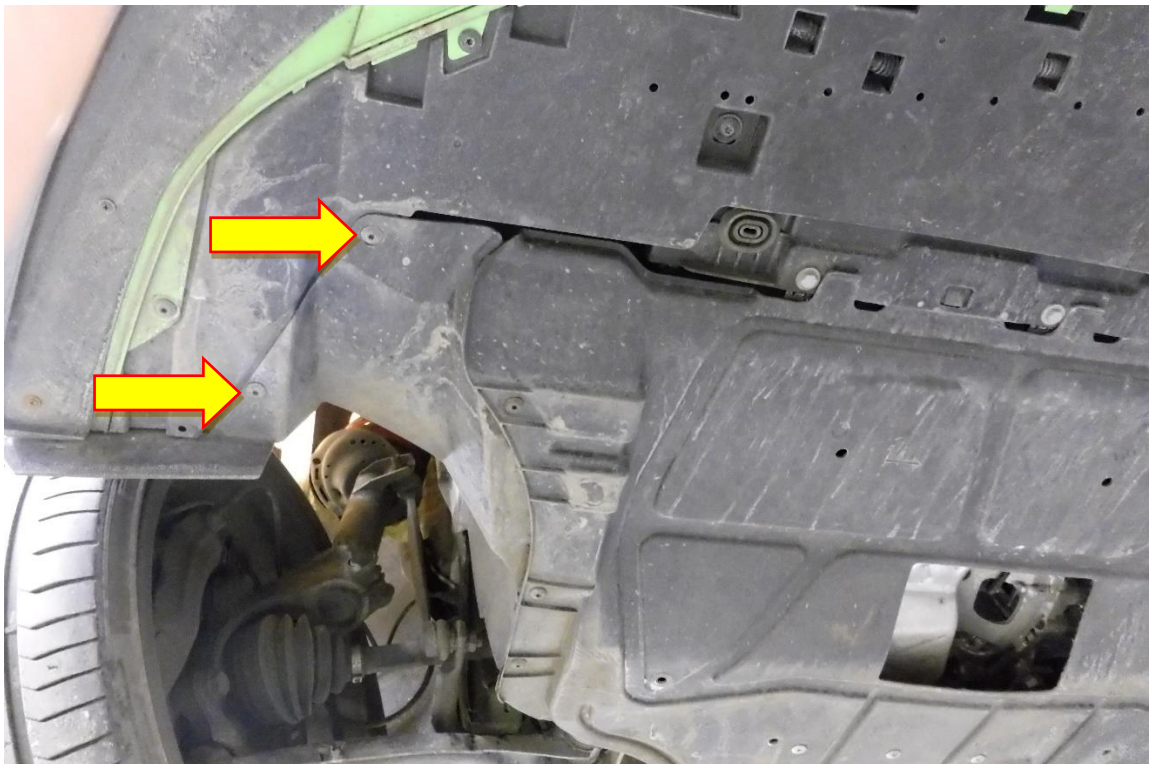
6. Pull the arch liner back to reveal 2 x fasteners attaching the bumper to the vehicle, use a T27 Torx driver to remove them on both sides.



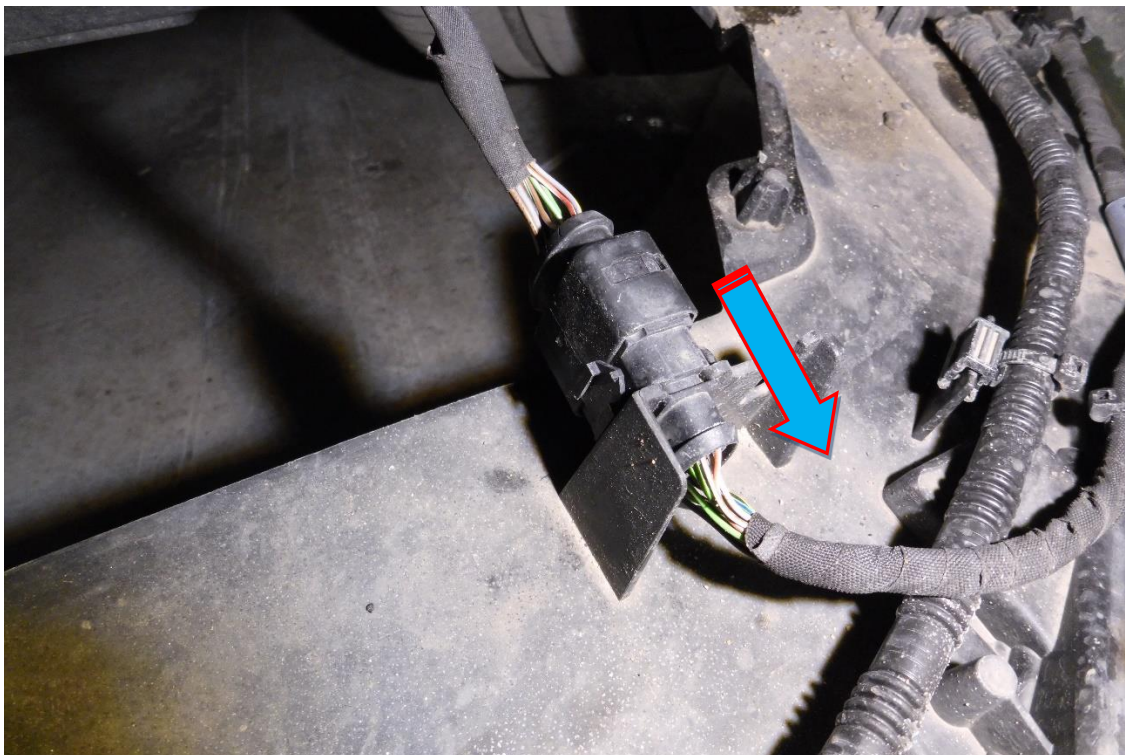
7. Using a T40 Torx driver remove the 3 x fasteners running on the underside of the vehicle.



8. Using a T20 Torx driver remove 2 x fasteners each side of the underside of the bumper.



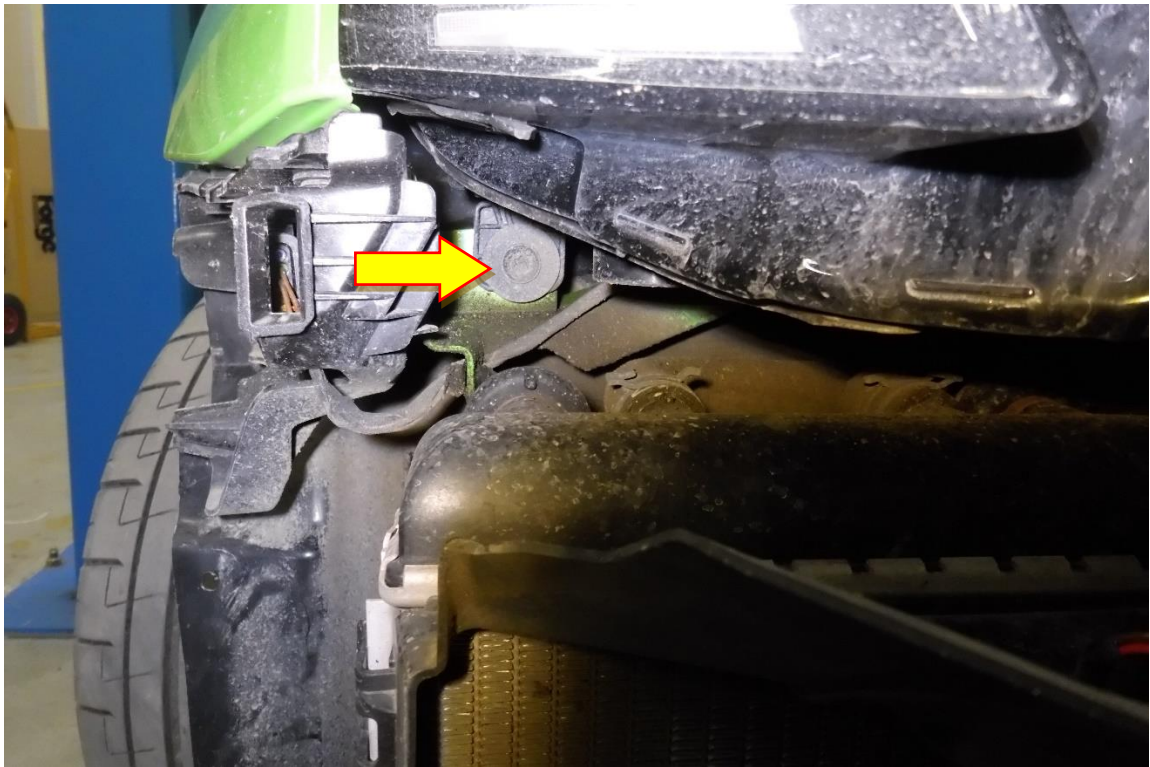
9. Pull both sides of the bumper away and release it from the vehicle, but not fully. Un plug the parking sensor loom and disconnect the headlight washers by depressing the retaining clip and pulling the pipe upwards and empty the washer fluid into a suitable container.





10. Using a T27 Torx drive remove 4 x fasteners attaching each headlight to the vehicle. 3 x fasteners at the top of the headlight and 1 x fastener below. Once all the fasteners are removed pull the light forward and disconnect the wiring loom from the back, on both sides of the vehicle.

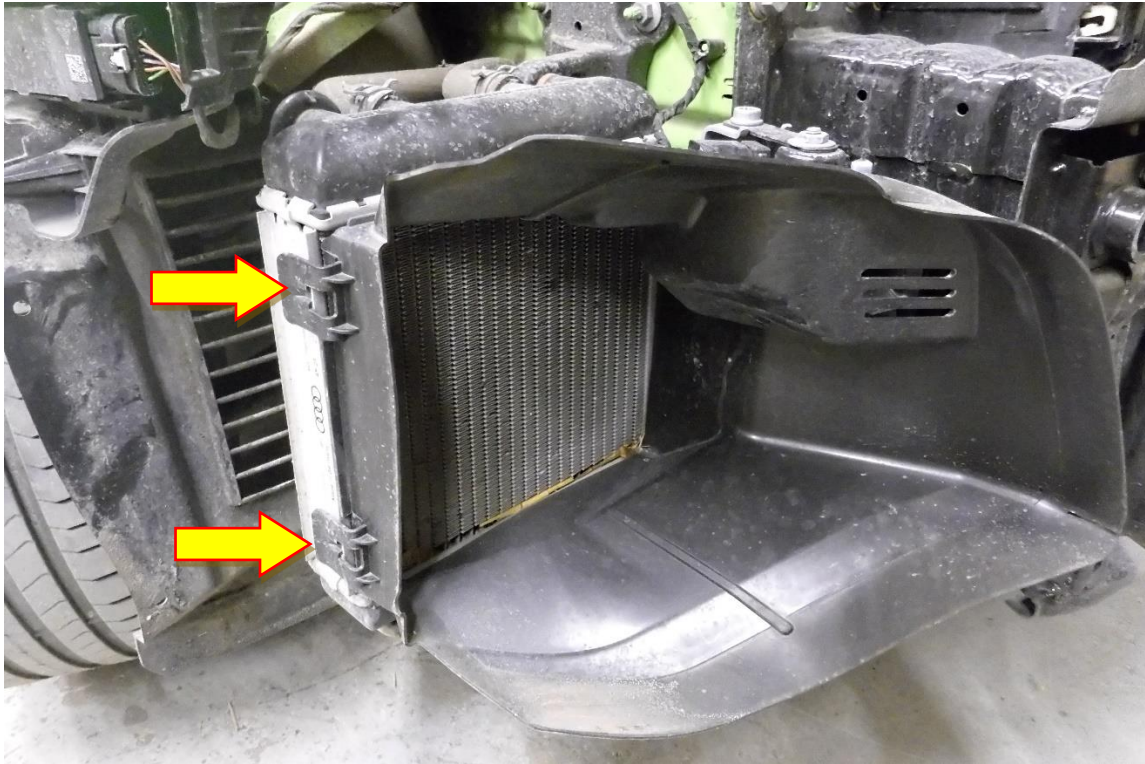




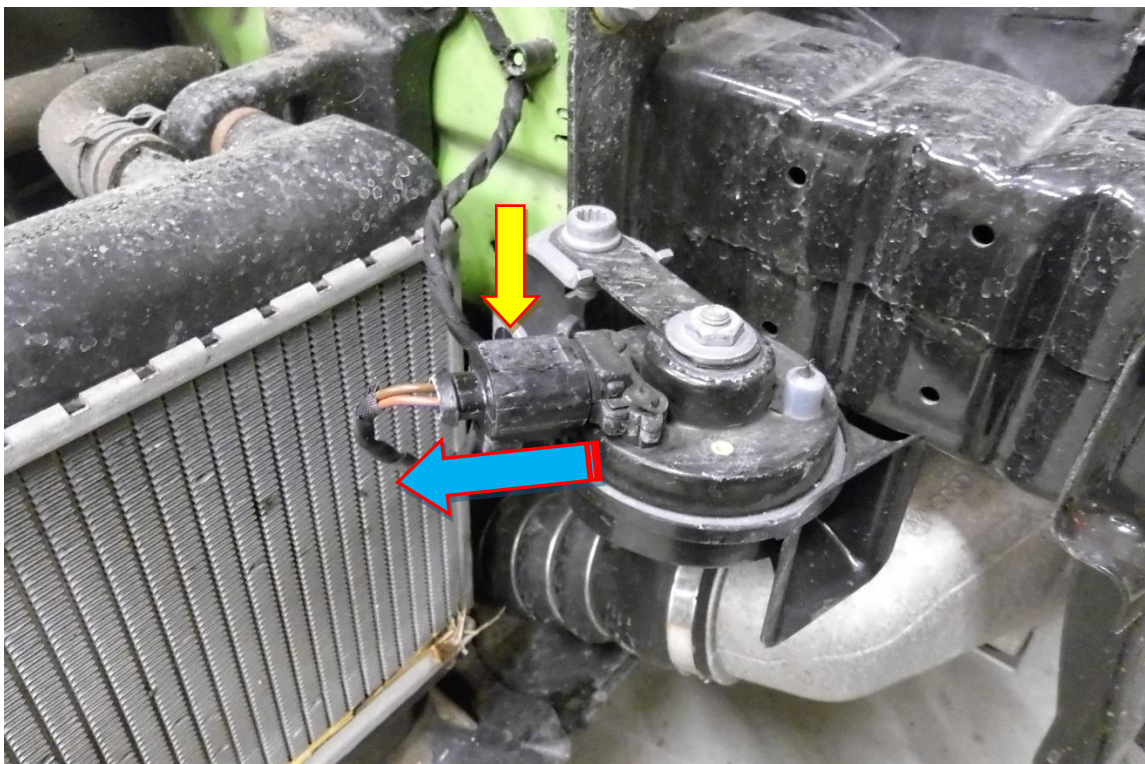
IMPORTANT: when unplugging with head light loom pull back the red locking clip.



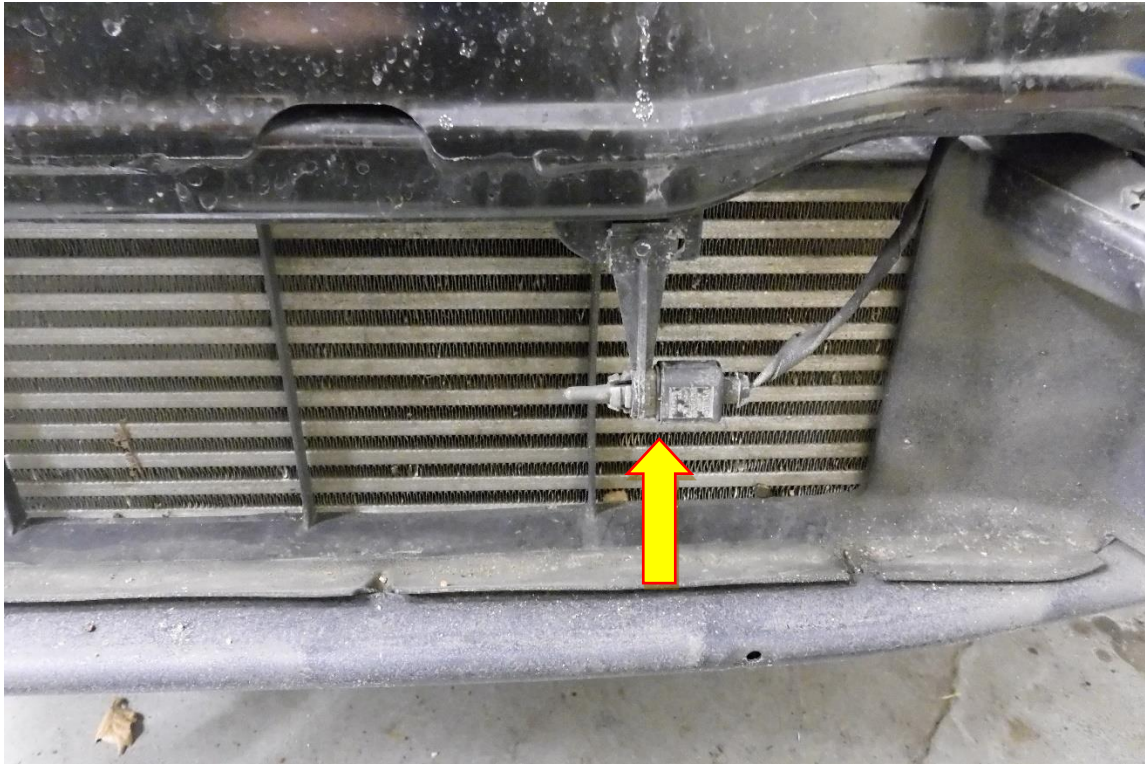
11. Unclip the retaining tabs attaching the air ducts to both auxiliary radiators and remove them from the vehicle.



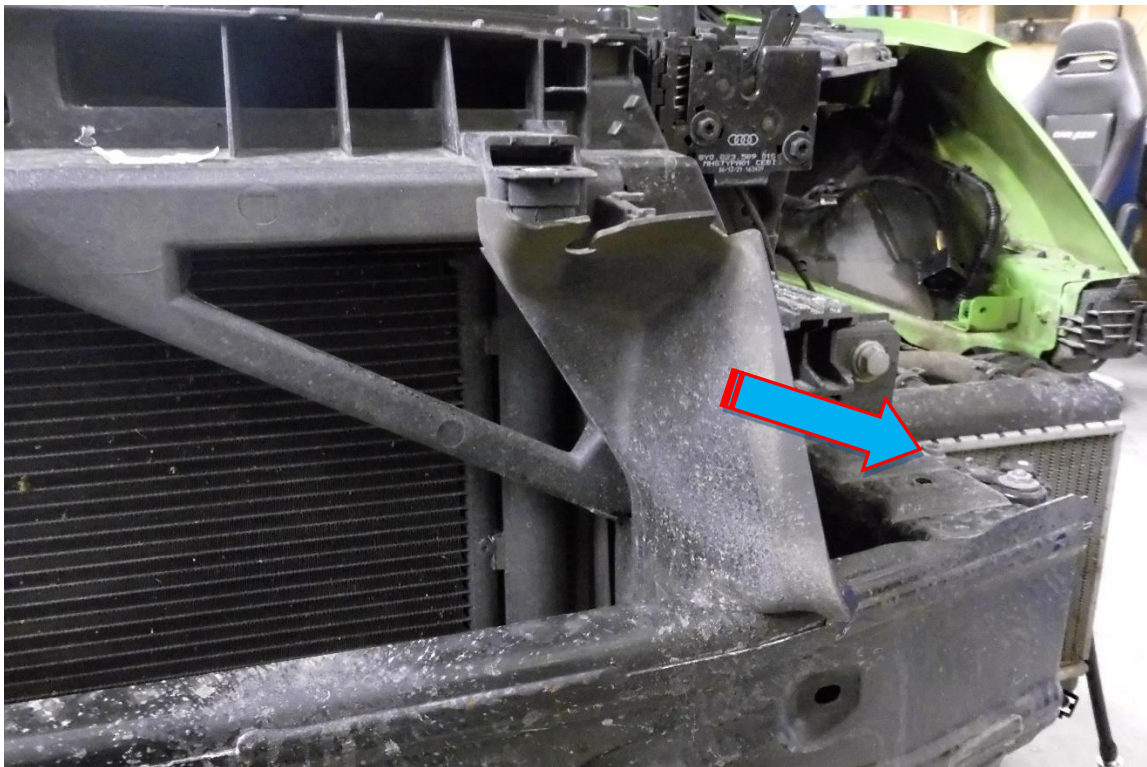
12. Unplug the horn and disconnect the wiring loom from the horn bracket on both sides of the crash bar.

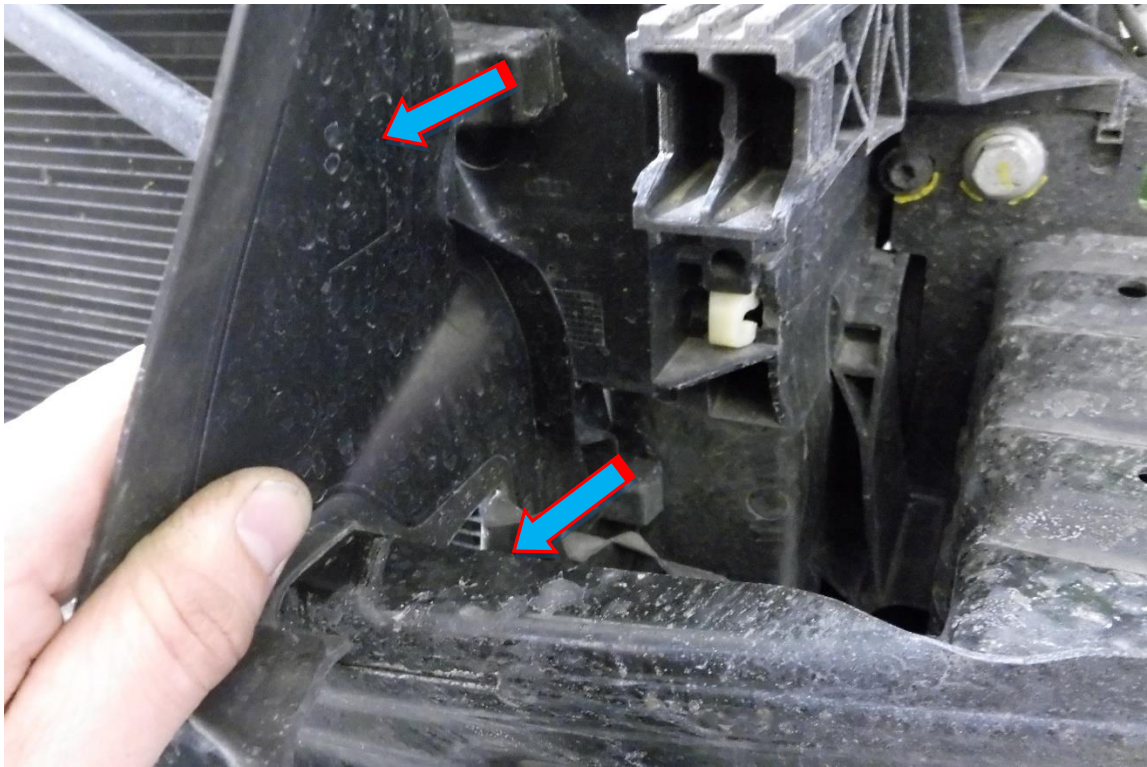


13. Un-clip the temperature sensor by squeezing the retaining clip at the front and pulling the body of the sensor.

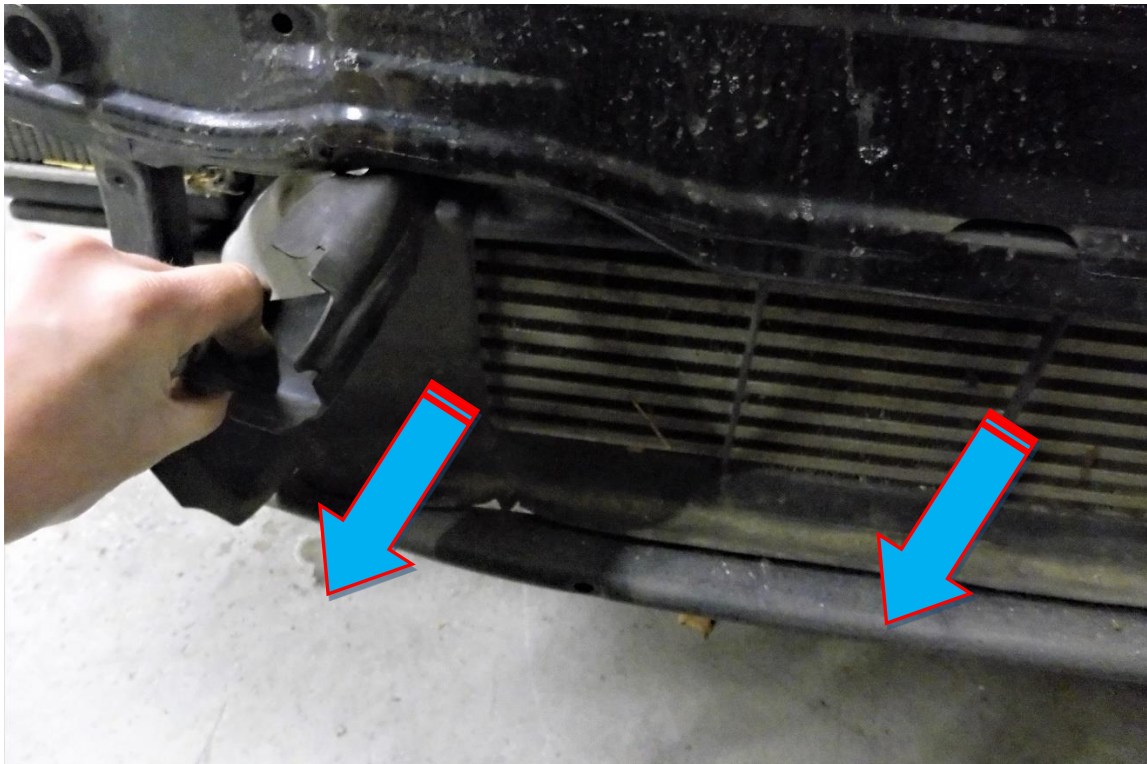


14. Simply pull at the base of the two upper air ducts to remove them on both sides.

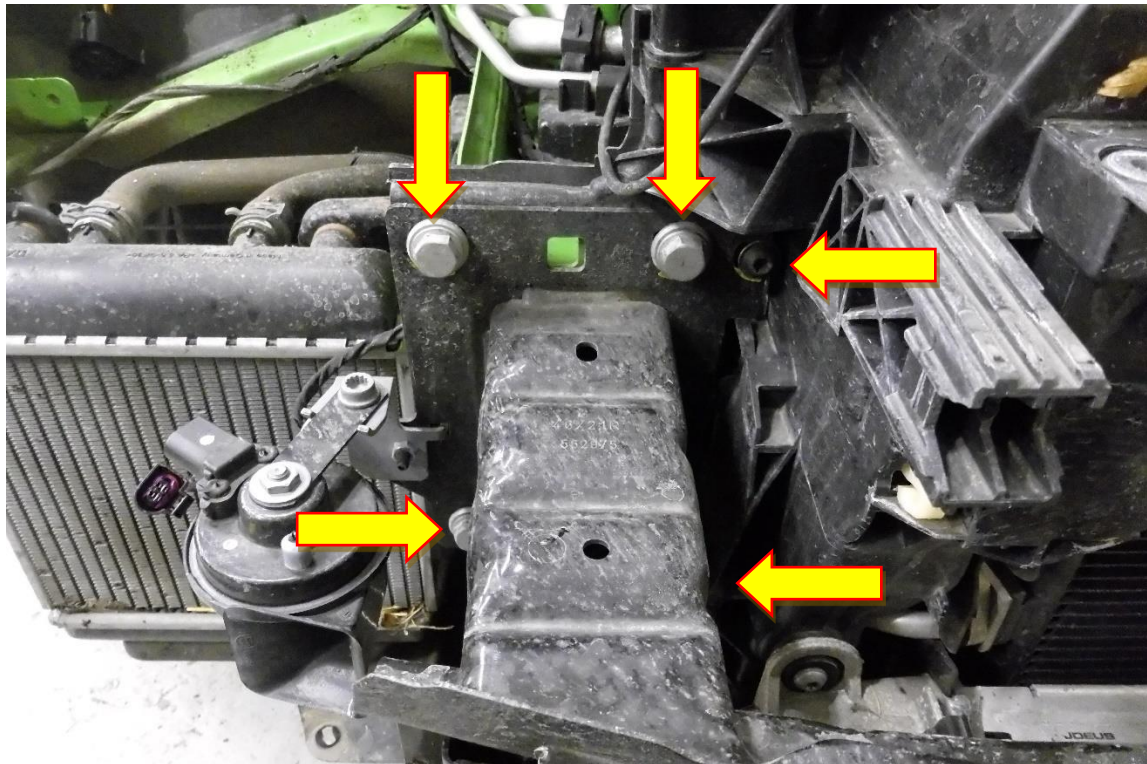




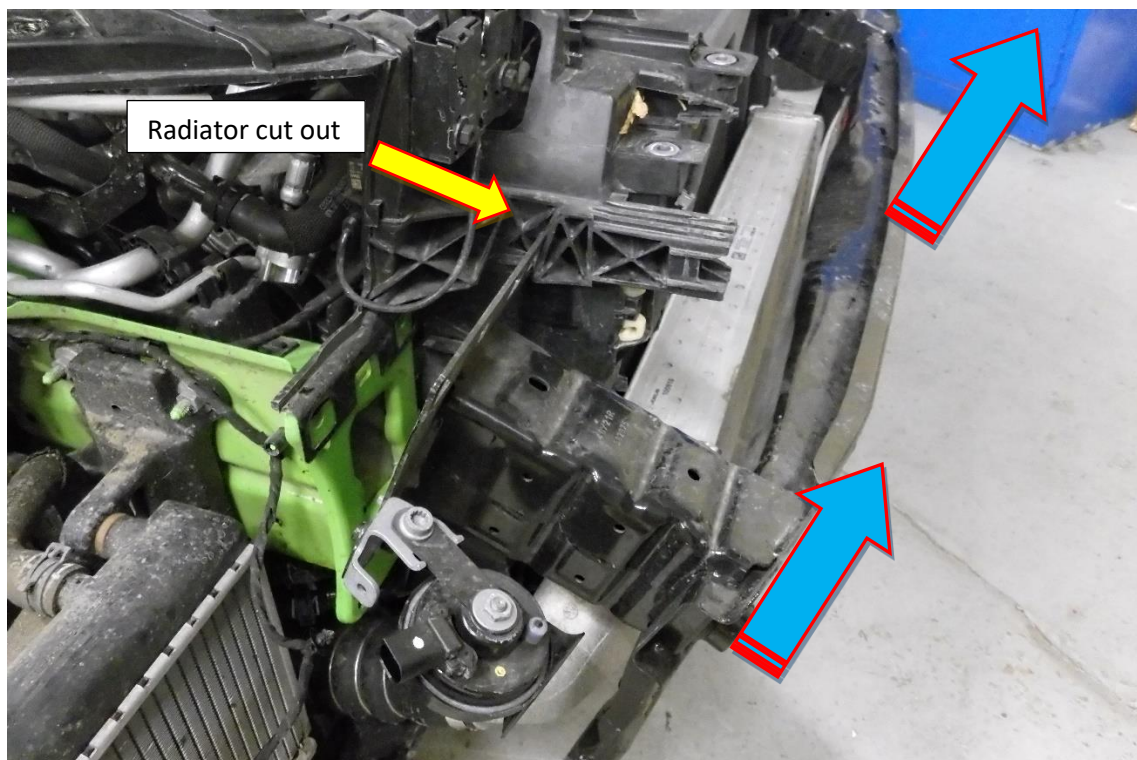
15. Pull the lower airduct away from the intercooler and out through the centre of the crash bar.
IMPORTANT: DO NOT REFIT THIS AIRDUCT WITH THE FORGE COOLER.



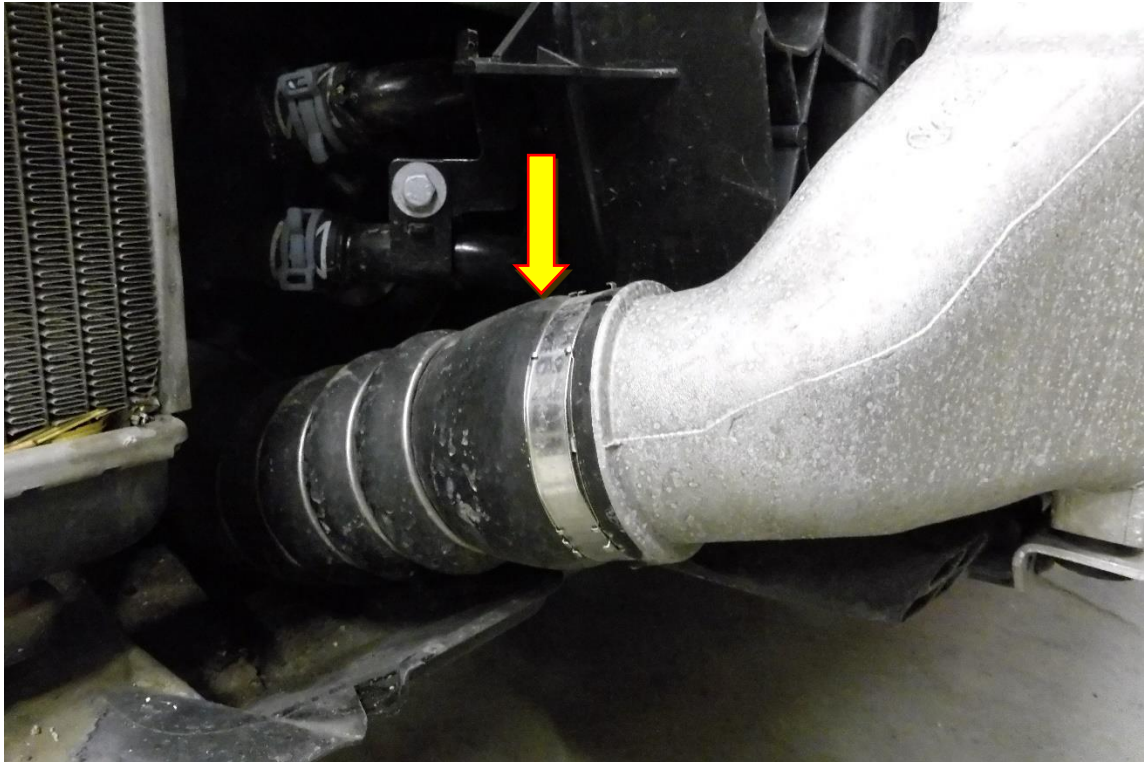
16. Using a 16mm socket and ratchet with a suitable extension remove 4 x M10 fasteners and using a T27 Torx drive remove 1 x M6 fastener on both sides of the crash bar.



17. Lift the crash bar upwards while angling it forwards so that it will pass through the cut out in the radiator pack.



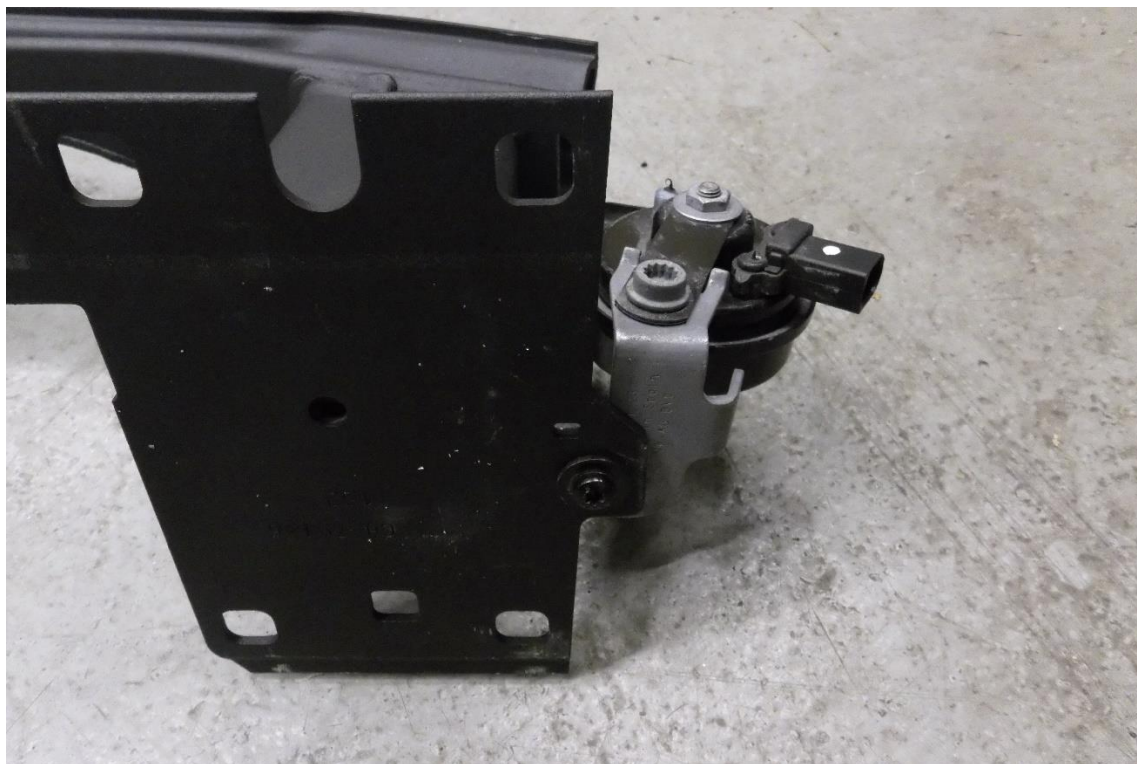
18. Using a 7mm socket and ratchet loosen both hose clamps and remove both boost hoses attached to the OE intercooler.



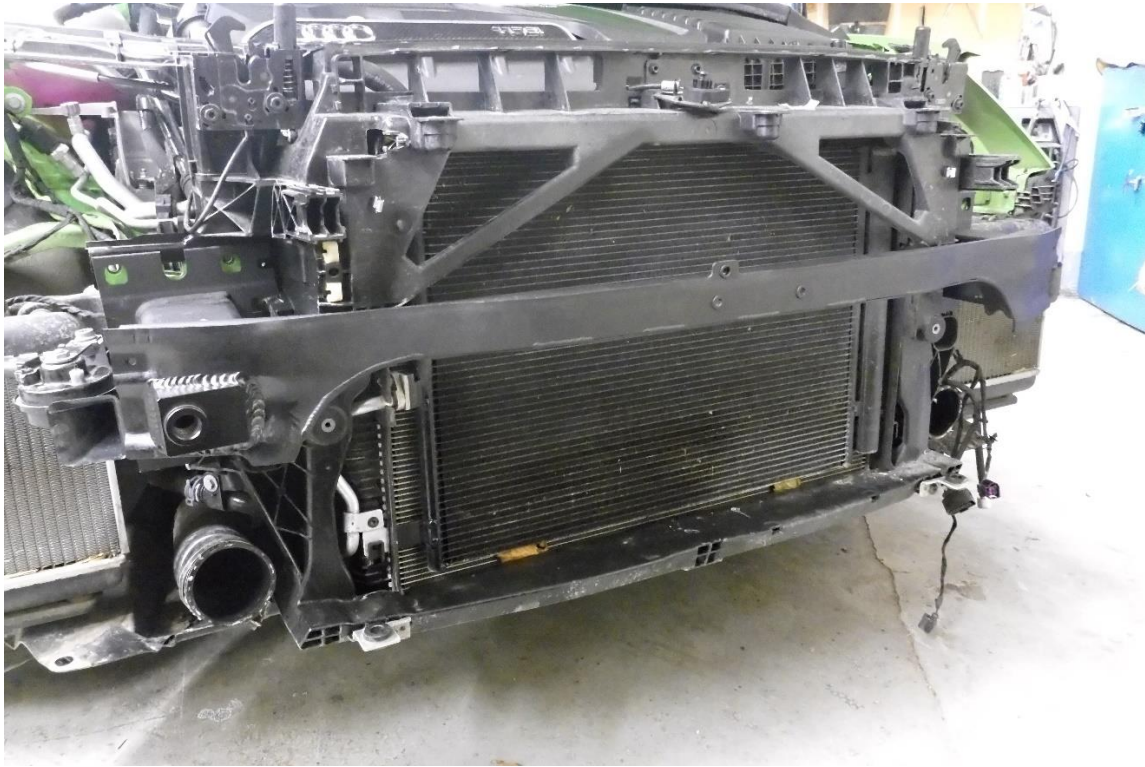
19. Using a T30 Torx drive remove the 2 x M6 fasteners attaching the OE intercooler to the vehicle. Now angle the intercooler towards you and pull upward to remove it from the vehicle.



20. Attach both horns to the crash bar in the same orientation as fitted to the OE crash bar.



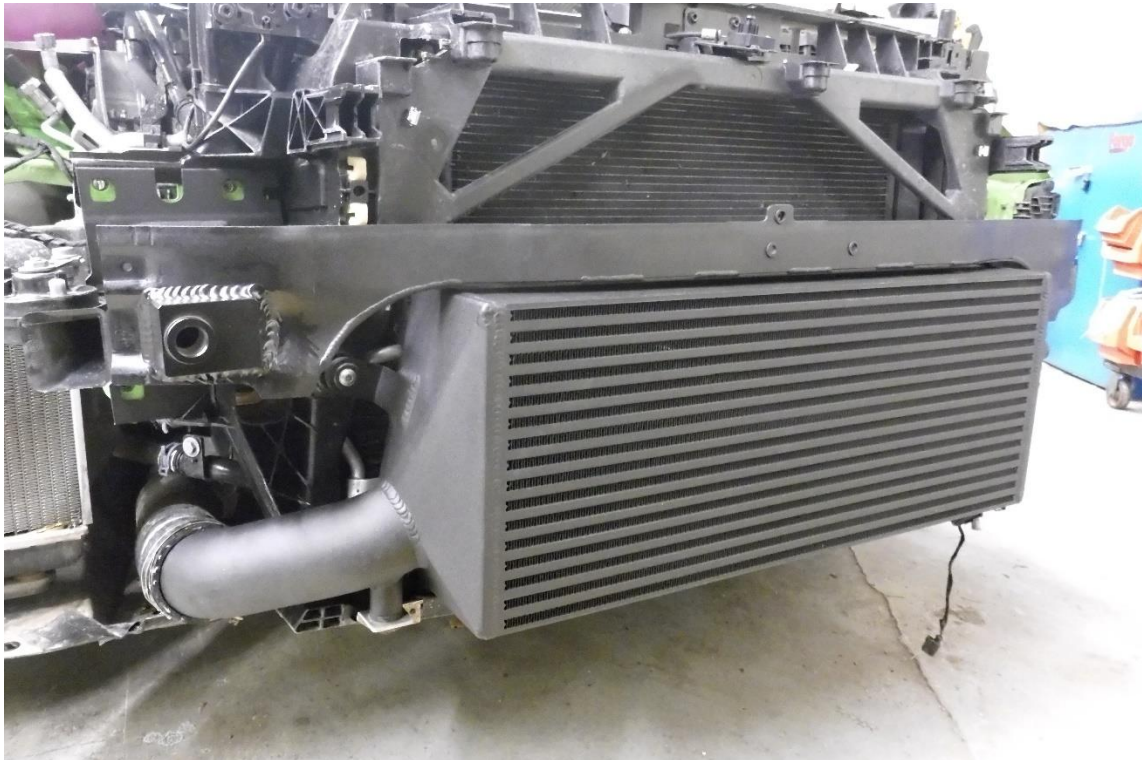
21. Install the Forge crash bar to the vehicle but do not secure into position at this stage.



22. Take the supplied rubber grommets and machined inserts and fit them to the intercooler as shown in the picture below.



23. Fit the Forge intercooler into place by angling it into position with the lower mounting pegs first then securing the upper brackets using the original fasteners and the supplied penny washers. Attach both boost hoses and tighten both hoses clamps.

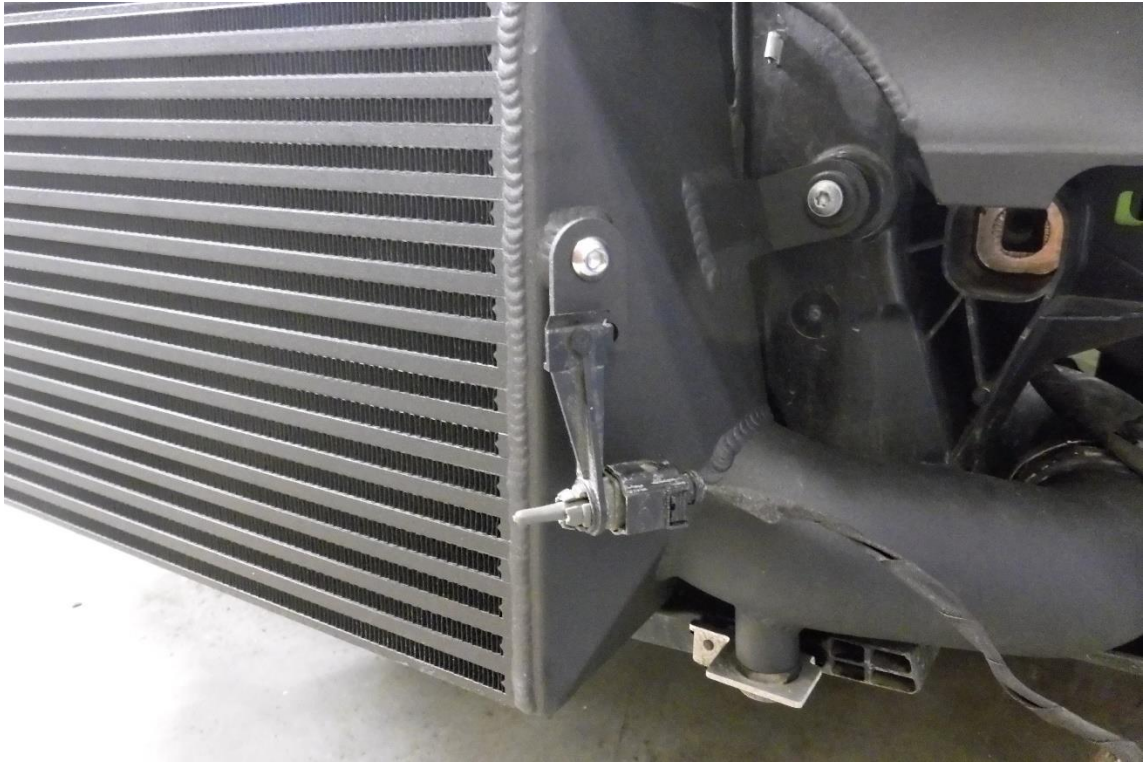


24. Using a small Pozi screwdriver push the locking pin through the centre of the temperature sensor bracket, you will be able to remove the bracket from the OE crash bar.



25. Fit the temperature sensor and its bracket to the Forge bracket from the FMINT33 kit. Using a 6mm Allen key and the supplied M8 fastener attach the temperature sensor to the intercooler and plug the loom as shown in the pictures below.





26. To complete your installation of FMINT33 follow steps 1-16 in reverse order. Then take your vehicle for a test drive and enjoy your new Forge Motorsport product.



Check out www.forgemotorsport.co.uk
and www.forgemotorsport.com
For a full range of performance products for your vehicle.

*If you have any questions or concerns about this product
or anything else, please feel free to contact your local or preferred
Forge Motorsport Dealer/Installer or you may contact us directly.*

Forge Motorsport UK (+44)1452 380999
Forge Motorsport USA (407)-447-5363
Forge Motorsport ASIA +886-4-22516887

info@forgemotorsport.co.uk
sales@forgemotorsport.com
sales@forgemotorsport.asia





Important Information Regarding Your New Forge Cooling Product

Thank you for purchasing a Forge Motorsport cooling product. You now have a product that simply leaves the competition behind – made in Great Britain, with a lifetime warranty. All you need to do now is install and maintain the product correctly to maximise its full potential.

All Forge products are tested before leaving our facility to ensure you 100% satisfaction and reliability.

General information and care for your Forge cooling product:

- ☐ On installing your intercooler/radiator, be sure that all hose clamps and fittings are tightened to prevent any leakage.
- ☐ Ensure that the intercooler/radiator and the associated plumbing components are not rubbing on any body parts. This can cause premature failure and warranty invalidation from Forge.
- ☐ Do not use any car cleaning products, particularly traffic film remover solutions or shampoos to clean your intercooler, radiator or oil cooler. The use of these products can damage the Forge cooling systems and invalidate your warranty.
- ☐ Any cleaning should be done with hot soapy water and well rinsed.
- ☐ We recommend that you should inspect your product on a regular basis for bent and/or crushed fins. Any bent fins should be carefully straightened to allow ambient air to pass through the core face.
- ☐ At the time of installing your Forge product, an approved coolant must be used and added to the coolant system. Be sure you never mix coolant and always use distilled water.
- ☐ On Forge Oil Coolers, please ensure all hose clamps and fixings are tightened and secured to prevent leakage.
- ☐ Do not exceed 9 bar (130 psi) rating on your oil cooler.

What should you do if a fault develops?

If you suspect that you have an issue, you should take your vehicle back to where the installation of your Forge product was carried out, or to a suitable and qualified tuner for investigation of the problem.

If you suspect that the problem has occurred due to faulty manufacture, please contact your Forge dealer or Forge Motorsport UK, Forge Motorsport USA or Forge Motorsport Asia, depending on your geographical location, to discuss the issue.

How to get the Best from your Forge cooling products

- ☐ Ensure the fitting is carried out by a reputable and competent garage, tuner, or mechanic.
- ☐ Carry out regular visual checks, inspections, and servicing.
- ☐ Only fit the Forge cooling product for the application that it was designed for.
- ☐ Do not fit other parts that could detrimentally affect the efficiency of your Forge cooling product.



info@forgemotorsport.co.uk
01452 380999
www.forgemotorsport.co.uk



sales@forgemotorsport.com
407 447 5363
www.forgemotorsport.com



sales@forgemotorsport.asia
886-4-22516887
www.forgemotorsport.asia